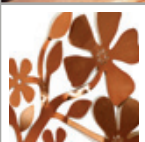


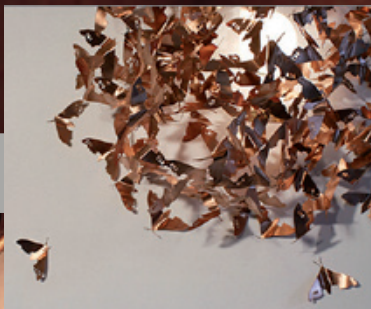
exploring the potential of copper in design world

[www.copperindesign.org](http://www.copperindesign.org)

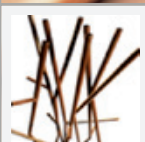
issue 32 April 2012



art



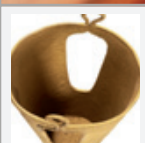
Copper Moth Light **3**



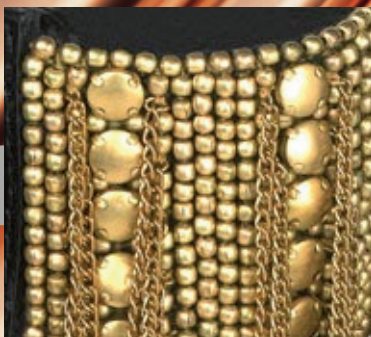
furnishing **Gridclock Furniture**



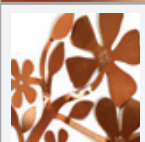
**4**



objects



The Temporium **5**

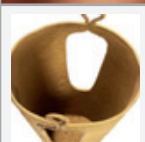


art

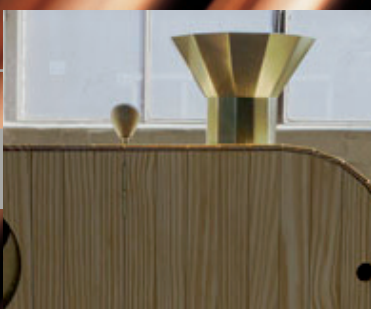
Art In Progress



**6**



objects



Paternoster **7**

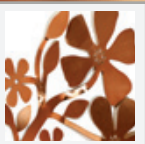


objects



Ballpoint

8

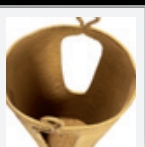


art

Massive Gongs



9

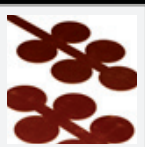


objects



Tea Caddies

10

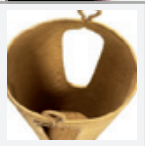


lighting

E5.55 Necklace



11



objects



Brilliant Tableware 12

www.copperindesign.org is a meeting space for contemporary designers and their followers. This international platform provides a comprehensive source of information on the crafting of the red metal: copper creations, first-hand accounts from designers, exhibitions, competitions and many others. The website is aimed at creators, design professionals, journalists and all copper-loving net surfers, offering them an invitation to (re)discover this material whose natural properties have established it over the past few years as an essential feature of the design scene.

Sponsor: European Copper Institute [www.eurocopper.org](http://www.eurocopper.org)



# Misher + Traxler

## Copper Moth Light



■ To forever preserve an endangered, nocturnal moth species, Austrian industrial artists Katrina Mischer and Thomas Traxler have built an artful wall lamp in the hope that its glow highlights conservation and animal preservation.

The limited-edition Moth Lamp is part of the artists' "RealLimited" series of works, which explores the limitations of reality. The water jet-cut and hand-riveted copper moths crowd a lightbulb at the centre of the lamp, each representing one of the estimated remaining Marumba quercus species of moths.

Link: [www.mischertraxler.com](http://www.mischertraxler.com)





# Philippe Malouin

## Gridclock Furniture

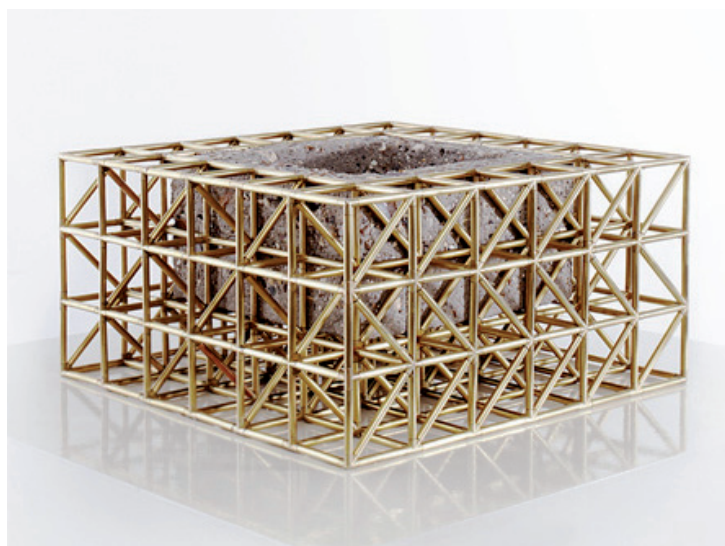
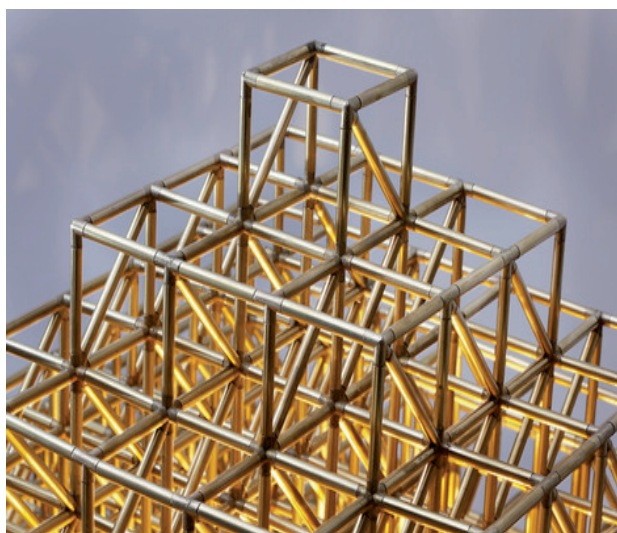


■ French designer Philippe Malouin has designed a large collection of bookcases, tables and home accessories made with a series of brass grids and concrete slabs.

The way the brass grids express large architectural volumes with minimal matter makes it clear why they appealed so much to the utopian designers of the 20th century – architects and engineers such as Buckminster Fuller, Cedric Price and Yona Friedman.

With space frames and geodesic domes, Philippe Malouin takes the modular, repeatable nature of metal-framed structures and extends them outwards to their logical conclusion, proposing vast, city-enclosing megastructures.

Link: [www.philippemalouin.com](http://www.philippemalouin.com)





# Fiona Paxton

## The Temporium



■ London-based fashion designer Fiona Paxton has recently designed a new jewellery collection called The Temporium.

Her work includes hand-beaded chain mail necklaces, beaten brass rings and leather cuffs made of polished brass and silver.

Fiona Paxton has created a distinctive and global profile. The trained textiles designer launched her eponymous label in 2008, creating striking hand-beaded necklaces and bracelets in geometric patterns.

The designer has found the right mix of eye-catching newness and retaining the individuality of each hand-crafted piece, creating a winning alternative to the ubiquitous British high street.

Her fail-safe intuition for both beautiful patterns and the customer's wishes has resulted in a collection of vibrant beaded necklaces that elegantly snake around the neck and bracelets to make every hand gesture a joy.

Link: [www.fionapaxton.com](http://www.fionapaxton.com)





# Baltazar Torres

## Art In Progress



■ Portuguese artist Baltazar Torres' small-format works deal with social and political matters and problems. He creates small worlds made of bronze and wood that show hostile urban environments. Additionally, the viewers themselves become part of the work through integrated mirrors. The pieces invite one to look closely to perceive every small detail. He meditates about themes like urbanisation, social pauperisation and isolation. Baltazar Torres' works are displayed in several collections across the world, including the Institut Valencia d'Art Modern and the Fundación Ars Teor Etica in Costa Rica.

Link: [www.galerie-mam.com](http://www.galerie-mam.com)





# Philips Design

## Paternoster



■ Paternoster is a concept, developed by Philips Design, for a domestic plastic waste up-cycler that uses mycelium to break down plastic packaging waste.

There is a fundamental contradiction between the need for disposable plastic packaging and the need for environmental sustainability. By its very definition, packaging must be robust and able to withstand attack by the environment over months or years. But biodegradability is precisely the property of yielding to attack by the environment in a reasonably short space of time. Beyond bacteria, one class of life stands out as a powerful decomposer: the fungus.

The paternoster waste up-cycler concept utilises the properties of fungi that have powerful enzymes and decomposing power. A mycelium attached to plastic would have the ability to decompose and metabolise the plastic. Provided the inks on the plastic did not contain toxic heavy metals, this mycelium could, in theory, generate edible mushrooms.

The paternoster is made out of plywood and copper, and uses off the shelf bottles and containment canisters. It can be self-assembled and is designed to show its workings and make the slow cycle of decomposition understandable to children. This concept is designed to raise awareness about waste and natural methods of regeneration.

Link: [www.design.philips.com](http://www.design.philips.com)





# Minimalux

## Ballpoint



■ British design brand Minimalux has launched Ballpoint, a ballpoint pen made of solid brass.

The basic ballpoint pen, or 'Biro' as it has become known, has been a useful accessory to our daily lives for many years. Its familiar, cheap plastic casing is synonymous with the product but also its disposability.

Ballpoint has a common, replaceable refill but a casing that is permanent. Designed ergonomically, with careful consideration to weight and balance, it delivers a smooth and fluid line with very little applied pressure - transforming the performance of the humble refill and providing an effortless and noteworthy writing experience.

The pen uses a replaceable refill, available with either blue or black ink, and the brass shell is unplated - allowing the metal to develop a patina of use over time.

Link: [www.minimalux.com](http://www.minimalux.com)





# Harry Bertoia

## Massive Gongs



■ During the last Design Miami/Basel art fair in Miami, the Merrill Antiques gallery showcased three exceptional renewed works designed by famous artist Harry Bertoia, two of which were created as part of a music-themed suite of massive works for the Grieg Concert Hall in Bergen, Norway.

The Sonambient Sculpture, dated 1970, comprises 13 bronze rods, each finished with a beryllium copper sphere on the top, and a solid bronze base, 36" square. It is the largest sonambient work of Bertoia's that is not currently in a public installation. The spheres knock together, causing the sculpture to emit sound.

The gallery has also featured a massive Double Gong sculpture from 1976. A pair of large gongs, six and eight feet in diameter, are suspended on a twin prong base and can be struck with a custom mallet to produce a sound resembling low thunder.

Harry Bertoia created massive Sonambient sculptures – both musical instruments and works of art – beginning in the 1960s.

Link: [www.merrillantiques.com](http://www.merrillantiques.com)





# Kaikado

## Tea Caddies



■ For more than 130 years, Kaikado has been producing hand-made Japanese tea caddies designed to last for generations. Kaikado was established in 1875, shortly after Japan opened its doors to the rest of the world and began importing tinsplate from England. Tin was used for the plating of steel, and was considered a fashionable, foreign-made item.

Takahiro Yagi, the 6th generation of the tea caddy makers, learned the craft at a very young age by watching his grandfather and father work. Today, Kaikado stays true to its origins and hand-made process of over 130 steps, and still produces some of its founder's original designs.

Over time, the following generations introduced new designs and materials like brass and copper, but Kaikado's spirit has been left untouched.

One of the most notable characteristics of Chazutsu is its graceful aging, the changing tone of its exterior. Each of the materials subtly changes colour at a different pace. Copper is the quickest to show at two or three months, followed by brass, which can take between one and three years, while tin can take as long as five years. Since Kaikado's tea caddies are made to last more than 100 years, their colour can change quite dramatically, but as a fine wine, it becomes even more appreciated with age.

Link: [www.kaikado.jp](http://www.kaikado.jp)





# Michiel Cornelissen

## E5.55 Necklace



■ The E 5.55 Necklace, by Dutch designer Michiel Cornelissen, uses 3D printing to string together five-eurocent coins and form an innovative necklace. Copper can oxidise and become darker over time, which gives a beautiful appearance. The necklace itself can be cleaned with water and soap and even dishwashed, after removing the coins.

Cornelissen says of the piece, "I'm always intrigued by the beauty of some of the things we take for granted; like coins – little industrial gems. This project makes use of the intricate geometries and flexible behaviour that are possible with 3D printing, holding 111 five-eurocent coins firmly in place to create a stunning necklace."

Link: [www.michielcornelissen.com](http://www.michielcornelissen.com)





# Maximilian Löw

## Brilliant Tableware



■ The Brilliant Tableware set, by young German designer Maximilian Löw, combines elegant, soft curves similar to that of classic cutlery with sharp, rigorous edges that give it modern, masculine appeal.

For each piece, a 3D model was created so that different variations could be built using CNC technology. After the ergonomic and aesthetic requirements were achieved, preparations for the bronze casting process were made. The result: stark yet elegant tableware in highly-polished bronze that deserves to be shown off.

Link: [www.yankodesign.com](http://www.yankodesign.com)

