



# arts & architecture

PRICE 50 CENTS

JANUARY 1955

**COVER:**

The cover is a detail from the metal screen by Harry Bertoia as shown on pages 18 and 19.

# arts & architecture

**EDITOR: JOHN ENTENZA**

**EDITORIAL ASSOCIATES**

Flora M. Brown  
Herbert Matter  
James Fitzsimmons  
Jules Langsner  
Peter Yates  
Bernard Rosenthal  
Grace Clements  
Robert Joseph

**STAFF PHOTOGRAPHERS**

Harry Baskerville  
Julius Shulman

**EDITORIAL ADVISORY BOARD**

Dr. Grace L. McCann Marley  
William Wilson Wurster, A.I.A.  
Walter Gropius, A.I.A.  
Ernest Born, A.I.A.  
Richard J. Neutra, A.I.A.  
Wilton Becket, A.I.A.  
Marcel Breuer, A.I.A.  
Gardner A. Dailey, A.I.A.  
H. Roy Kelley, F.A.I.A.  
Whitney R. Smith, A.I.A.  
John Rex, A.I.A.  
Mario Corbett, A.I.A.  
A. Quincy Jones, A.I.A.  
Fred Langhorst, A.I.A.  
Raphael Soriano, A.I.A.  
John Funk, A.I.A.  
Gregory Ain, A.I.A.  
Henry Hill, A.I.A.  
Ira J. Bach, A.I.P.  
Konrad Wachsmann  
Hollis S. Baker  
Eduardo F. Catalano  
Paul Rudolph  
Isamu Noguchi  
Finn Juhl  
George Nelson  
Gyorgy Kepes  
Harriet Janis  
Garrett Eckbo  
Edgar Kaufmann, Jr.  
Dorothy Liebes  
Esther McCoy  
Edward Frank  
Claire Falkenstein  
Harold W. Grieve, A.I.D.

**ADVERTISING REPRESENTATIVES:**

Loren Hays  
The Hays Company  
1709 West Eighth Street, Rm. 412  
Los Angeles 17, California

Carl R. Lucke  
Carl R. Lucke and Associates  
24774 Gessner Road  
North Olmsted, Ohio

Scott Kingwill  
Scott Kingwill and Associates  
35 East Wacker Drive  
Chicago 1, Illinois

## CONTENTS FOR JANUARY 1955

### ARCHITECTURE

The Shell as a Space Encloser by Felix Candela, Architect	12
House by Kenneth S. Wing, Architect and Edward A. Killingsworth	20
Hillside House by Thornton M. Abell, Architect and William E. Stimmel	22
House in Mexico by Juan Sordo Madaleno, Architect	24
Design Studio by Terry Waters	26
Small Apartment by Raymond Kappe, Architect	27
House in Australia by Kenneth McDonald, Architect	28
Small House in Florida by J. West, Architect	29

### SPECIAL FEATURES

The Layman Discusses Modern Art (2) by Jules Langsner	16
Metal Sculpture—Harry Bertoia	18
Handthrown Ceramics—Gertrud and Otto Natzler	23
Art	4
Music	9
The Contemporary Object	9
Notes in Passing	11
J.O.B.	32
Currently Available Product Literature and Information	36

ARTS & ARCHITECTURE is published monthly by John D. Entenza, 3305 Wilshire Boulevard, Los Angeles 5, California. Established 1911. Entered as second class matter January 29, 1935, at the Post Office, Los Angeles, California, under the Act of March 3, 1879. Price mailed to any address in the United States, Mexico and Cuba, \$5.00 a year; to foreign countries, \$6.50 a year; single copies 50 cents. Editorial material and subscriptions should be addressed to the Los Angeles office. Return postage should accompany unsolicited manuscripts. One month's notice is required for a change of address or for a new subscription.

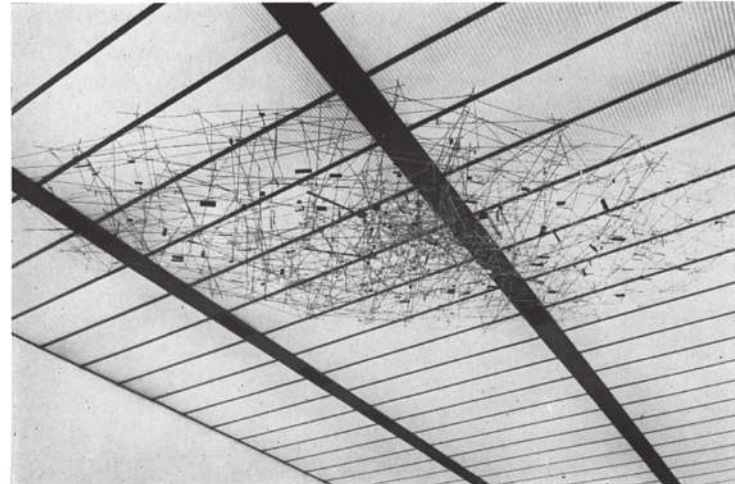
## METAL SCULPTURE—HARRY BERTOIA

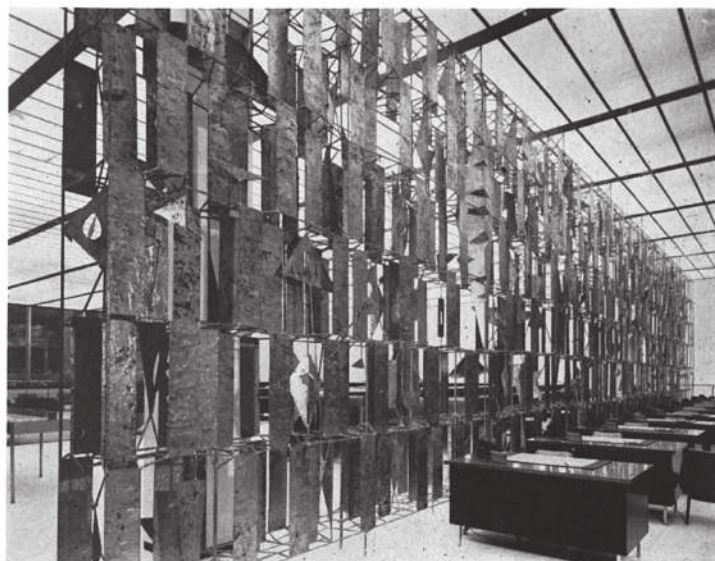
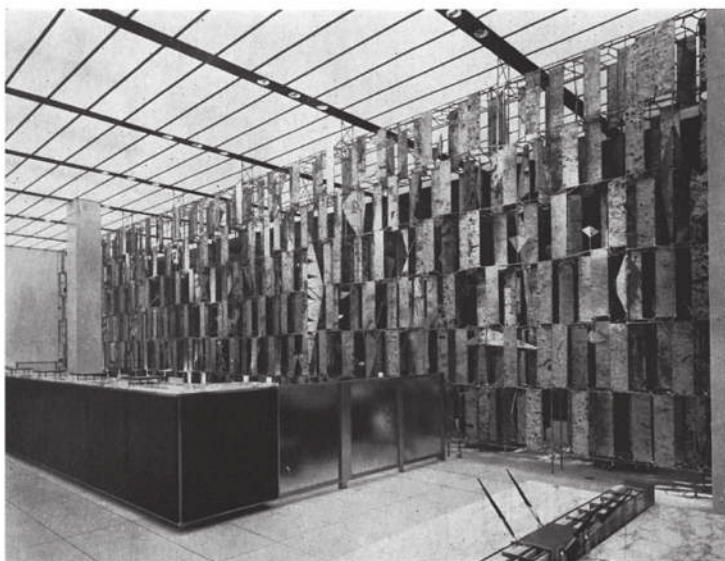
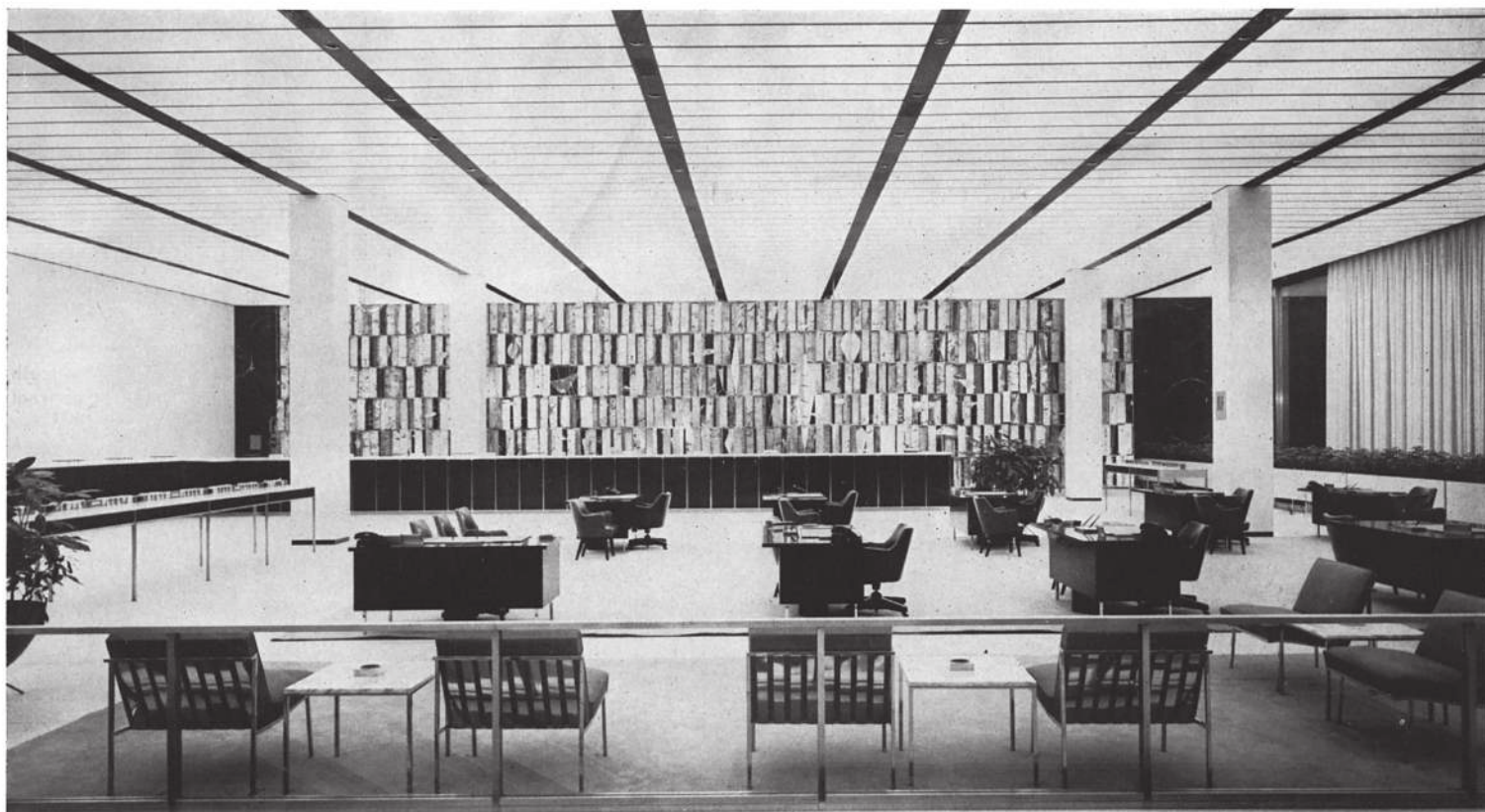
This relatively small building by Skidmore, Owings and Merrill, for the Manufacturers Trust Company in New York, represents not only a fresh point of view in banking architecture but is an excellent example of what happens when the architect works intelligently and cooperatively with the artist. The exterior of the structure is entirely of glass set in polished aluminum frames, but the focal point of the main banking floor is the great 70-foot long, 16-foot high, metal sculpture by Harry Bertoia. It is particularly significant that in this case, at least, the architect was responsible for the general conception and the selection of the artist. Bertoia worked in close collaboration with the designers of the building, and while in no way compromising his own creative directions succeeded beautifully in integrating his contribution within the whole so that one could not exist successfully without the other.

The screen was assembled from seven major sections with panels arranged in six vertical tiers and held in place by steel connecting bars. The texture and the gold and bronze tones of the panels were achieved by fusing brass, copper and nickel to the smooth surface of  $\frac{1}{8}$  inch enameling steel. This brazing process was accomplished with an acetylene torch and welding rods of various compositions. Illumination of the wonderfully intricate construction is by adjustable brackets concealed behind aluminum plates in the translucent vinyl plastic ceiling developed by the Marlux Corporation.



*"The sculptor of today is living in an age of industry and should take advantage of it. In my work this starts with the steel mill. I take this raw material, heat treat it with bronze and other alloys and provide a texture and a lasting surface. These metal parts are then so placed in relation to each other as to make the most of any given space."—Bertoia*





*Lower left: A delicate sculptured metal decoration is suspended over the escalator in the main banking room. "It is light in weight and feeling and linear in composition and offers the greatest possible contrast to the massive screen."  
—Bertoia*